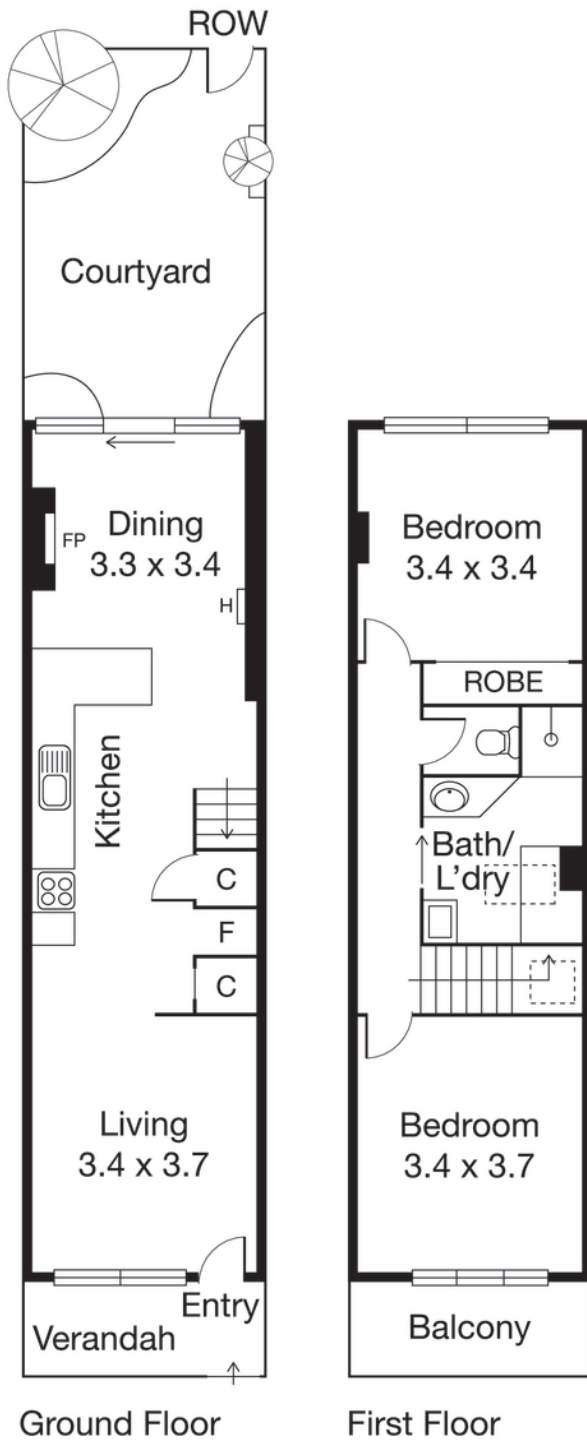


PORT MELBOURNE 76 Heath Street



CAYZER

PORT MELBOURNE 76 Heath Street



PERFECT POSITIONED PORT MELBOURNE TERRACE

- Situated in one of Port Melbourne's quiet locations, this double storey brick terrace is pretty as a picture.

Downstairs: Enter to a bright living room with picture window, through to kitchen with timber floors and dining room with open fire place, opening to private paved courtyard with mature trees and pedestrian access.

Upstairs: Two generous bedrooms, central bathroom with laundry facilities and high ceiling throughout.

This two-level home is situated in close proximity to Port Melbourne shopping precinct, excellent cafes and restaurants, a short walk from the South Melbourne Market, transport, parkland and the beach.

🏠 2 🛏 1

AUCTION Saturday 30th April at 11am

Inspection As advertised or by appointment

Contact Charlotte Broussard 0403 451 899
Geoff Cayzer 03 9690 9782

Mel Ref 57 D5



CAYZER

Albert Park 330 Montague Street 03 9699 5999
Port Melbourne 370 Bay Street 03 9646 0812

cayzer.com.au

Every care has been taken to ensure the information contained in this document is accurate. The diagrams/plans are a representation only and are not to scale. Interested parties should seek independent legal advice. Cayzer Real Estate Pty Ltd does not accept any responsibility or liability as a result of the information provided in this document. If your property is currently listed for sale with another agent, please disregard this notice. | Cayzer Real Estate Pty Ltd |